



Apartment

Lancaster Grove Belsize Park London NW3 4PB

£715 Per week

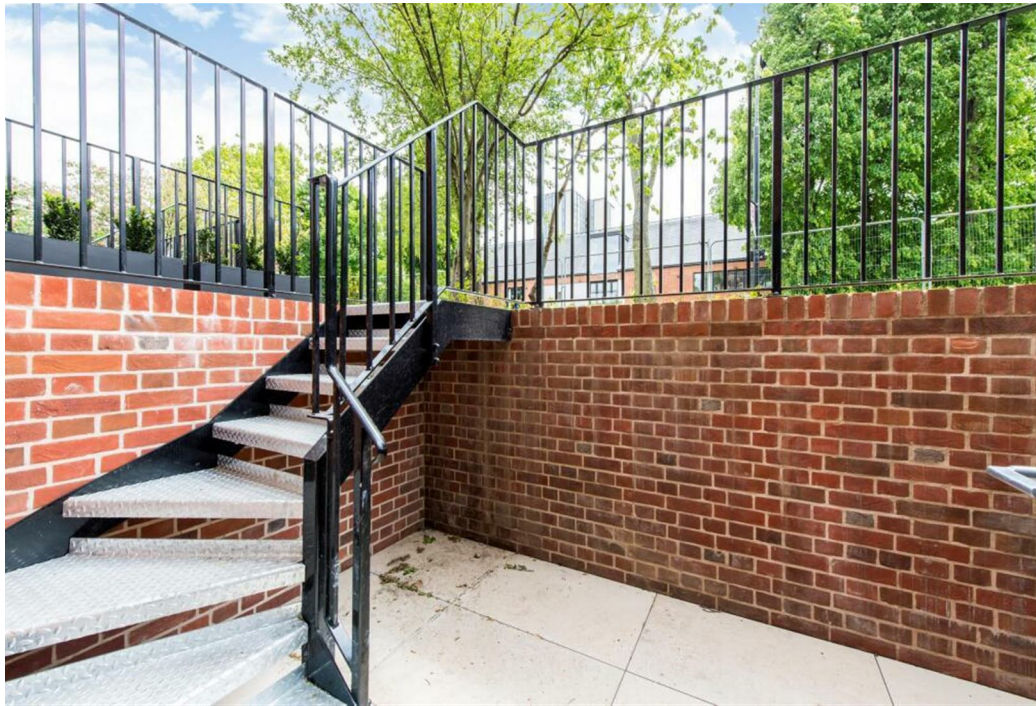
Council Tax Band: E

FEATURES

- Private garden
- One bedroom
- Open plan kitchen/reception room
- Bathroom
- Wooden flooring
- High specification

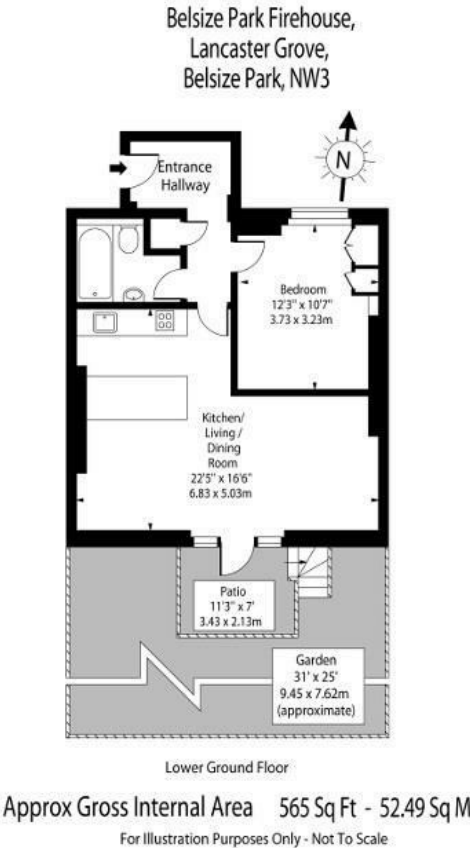


ADN
RESIDENTIAL



1 Bedroom Apartment located in London

A stunning one bedroom garden apartment forming part of the iconic Belsize Park Firehouse Development. Belsize Park Firehouse is a distinctive collection of exclusive homes crafted from an outstanding Grade II Listed former fire station at the heart of sought-after Belsize Park. This wonderful home offers modern fixtures and fittings and comprises, open plan kitchen/reception room with direct access onto a private patio leading onto a raised grass garden, principal bedroom with good storage and a family bathroom. Additional benefits include wooden flooring and an abundance of charm and character. Belsize Park Firehouse is perfectly located 0.4m from Belsize Park Underground Station (Northern Line) and 0.6m from Primrose Hill Park.



Agents Note: Whilst every care has been taken to prepare these particulars, they are for guidance purposes only. All measurements are approximate and are for general guidance purposes only and whilst every care has been taken to ensure their accuracy, they should not be relied upon and potential buyers are advised to recheck the measurements.



Energy Efficiency Rating		
	Current	Potential
Very energy efficient - lower running costs		
(92 plus) A		
(81-91) B		
(69-80) C	74	74
(55-68) D		
(39-54) E		
(21-38) F		
(1-20) G		
Not energy efficient - higher running costs		
England & Wales	EU Directive 2002/91/EC	

Call us on
020 7407 5155

info@adnresidential.co.uk
www.adnresidential.co.uk

